



• 국내총공업계 최초
별첨부 ISO 90 미인증 획득



• 국내총공업계 최초
환경부 ISO 14 001 인증 획득



• 승강기업계 최초
A/S우수기업 인증 획득



• 국내총공업계 최초
승강기 전무부 CE 마크 획득



• 우수 산업 디자인(GD)
마크 획득



• 승강기 주요 안전부품
K-mark 인증 획득



• 품질경영 우수기업
인증(한국표준협회)



Moving solutions with safety, reliability and efficiency

ELEVATOR DESIGN GUIDE



www.hyundaelevator.co.kr

▲ HYUNDAI ELEVATOR CO., LTD.

■ 본사 및 공장

(우)467-734 경기도 이천시 부발읍 아미리 산 136-1
대표전화 : (031)644-5114 FAX : (02)745-4227
Homepage : http://www.hyundaelevator.co.kr
E-mail : e-biz@hyundaelevator.co.kr

■ 서울사무소

서울시 종로구 동숭동 1-83 (우)110-510 TEL. (02)3670-0500

· 영업1부 : TEL. (02)3670-0560 FAX. (02)3672-8762
· 영업2부(주차팀) : TEL. (02)3670-0760 FAX. (02)3672-8765~6
· PSD사업부 : TEL. (02)3670-0782 FAX. (02)3672-4111~2
· 해외영업부 : TEL. (02)3670-0658 FAX. (02)3672-8763~4
· 물류사업부 : TEL. (02)3670-0820 FAX. (02)3672-4114~5
· 설치부 : TEL. (02)3670-0920 FAX. (02)3672-4274~5
· 고객지원부 : TEL. (02)3670-0960 FAX. (02)3673-1785~6
· 승강기교체영업 : TEL. 강남 (02)3670-0961 강북 (02)3670-0962

■ 천안물류센터

충남 천안시 임창면 용정리 235-2 (우)330-820
TEL. (041)582-7015~7 FAX. (041)582-7018

■ 부산사무소

부산시 금정구 구서동 248-10 현대자동차 서비스 3층 (우)609-310
TEL. (051)512-6809 FAX. (051)516-9876

■ 대구사무소

대구시 동구 효목동 286-2 경복일보사 4층 (우)701-030
TEL. (053)741-8064~5 FAX. (053)755-5487

■ 광주사무소

광주시 서구 농성동 415-12 현대빌딩 6층 (우)502-200
TEL. (062)361-1633 FAX. (062)361-1632

■ 대전사무소

대전시 중구 오류동 188-15 사화연금회관 13층 1304호 (우)301-737
TEL. (042)536-1045 FAX. (042)534-8344

■ 전주사무소

전북 전주시 덕진구 금암1동 669-2 진북은행빌딩 13층 (우)561-711
TEL. (063)278-3126~8 FAX. (063)278-3129

■ 울산사무소

울산시 남구 신정2동 657-1 영도빌딩 5층 (우)680-012
TEL. (052)272-2104 FAX. (052)276-2542

■ 강원사무소

강원도 강릉시 교동 1005-4 진명빌딩 5층 (우)210-100
TEL. (033)647-2601 FAX. (033)647-2633

■ 인천사무소

인천시 부평구 갈산1동 175-13 21C빌딩 5층 (우)403-081
TEL. (032)505-0430~2 FAX. (032)505-0433

■ 마창사무소

경남 마산시 회원구 압록동 59-2 마산현대오피스빌 1203호 (우)630-490
TEL. (055)255-6354 FAX. (055)255-6355

■ 제주사무소

제주도 제주시 연동 291-44 현대자동차빌딩 3층 (우)690-170
TEL. (064)744-9619 FAX. (064)748-2523

HEAD OFFICE & FACTORY

San 136-1, Ami-ri, Bubal-eup, Ichon-shi,
Kyonggi-do 467-734, Korea
Tel : 82-31-644-5160 Fax: 82-2-745-4227
Homepage : http://www.hyundaelevator.co.kr
E-mail : e-biz@hyundaelevator.co.kr

SEOUL OFFICE(INT'L SALES DIV.)

1-83 Dongsong-dong, Jongro-ku, Seoul 110-510, Korea
Tel: 82-2-3670-0659 Fax: 82-2-3672-8763-4

■ HYUNDAI ELEVATOR INTERNATIONAL SALES & SERVICE NETWORK

U.S.A.

Hyundai Elevator Co., Ltd.
LA Office
879W. 190th St. Suite 580
Gardena, CA 90248 U.S.A.
Tel: 1-310-538-4770 Fax: 1-310-538-4745

JAPAN

Hyundai Elevator Co., Ltd.
11F, Yamato Life Bldg. 1-1-7, Uchisaiwai-cho,
Chiyoda-ku, Tokyo,
100-0011, Japan
Tel: 81-3-3519-6125 Fax: 81-3-3519-6126

PHILIPPINES

Hycor Industrial Sales Corp.
#81 Kapilgan Cor. Bayani St.,
Dona Imelda, Quezon City, Philippines
Tel: 63-2-716-0905/0923 Fax: 63-2-714-8896

INDONESIA

PT. Superhelindo Jaya
JL. KH. Moch. Mansyur No 19B,
Jakarta 10140, Indonesia
Tel: 62-21-631-8444 Fax: 62-21-632-6288

THAILAND

Loxley Public Co., Ltd.
Construction Materials Department
102 Na Ranong Rd, Klongtoey,
Bangkok 10110, Thailand
Tel: 66-2-348-8000 Fax: 66-2-240-3127/3128

BANGLADESH

Regional Traders Ltd.
Karim Chamber(3rd Floor)99,
Motijheel Commercial Area
Dhaka-1000, Bangladesh
Tel: 880-2-956-3122 Fax: 880-2-956-7377

INDIA

Kinetic Escalator & Elevator Ltd.
G-92, D-III Block, Midc, Chinchwad, Pune-411 019 India
Tel: 91-20-3950-2190-1 Fax: 91-20-2747-0568

PAKISTAN

Islamabad Industrial & Trading Corp.
304 Amber Estate Shakra-e-Faisal,
Karachi - 75350, Pakistan
Tel: 92-21-452-3237-8 Fax: 92-21-454-7405

EGYPT

International Eng. & Trade
10 El Hakam St., Helmeyt El Zayton Cairo, Egypt
Tel: 20-2-241-8542 Fax: 20-2-639-2672

U.A.E.

Arabian Elevators & Engineering Co., Ltd.
P. O. Box : 26031, Sharjah, U.A.E.
Tel: 971-6-561-4533 Fax: 971-6-561-5532

KUWAIT

Deal General Trading & Contracting Co.
P. O. Box 27956 Safat, 13140 Kuwait
Tel: 965-245-7925 Fax: 965-242-3510

JORDAN

Bseiso Engineering Materials Corp.
P. O. Box 830681 Amman 11183, Jordan
Tel: 962-656-99012 Fax: 962-656-99014

IRAN

Mehfakhr
Flat No. 84 8th Flr. No. 23 Corner of 13th St.
Asadabadi Ave. Tehran Iran
Tel: 98-21-872-6082 Fax: 98-21-855-3741

SAUDI ARABIA

M/S. Electromechanical & Technical Associates.,
P. O. Box 6591, Jeddah-21452, Saudi Arabia
Tel: 966-2-652-9000 Fax: 966-2-652-9090

CHINA

• China Operation Head Office
Hyundai Elevator Co., Ltd.
27F, Jinxuan Bldg., No.238 Nandan Rd (East),
Shanghai, China, 200030
Tel: 86-21-6427-6616 Fax: 86-21-6427-4428

• Beijing Office

Hyundai Elevator Co., Ltd.
Beijing Office
Golden Land Bldg, Rm517 & 518 No.32 Liang Ma Bridge Road,
Chaoyang District Beijing, 100016, China
Tel: 86-10-6464-3483 Fax: 86-10-6464-3394

*Shenyang Hyundai Elevator Co., Ltd.

No. 43 Shenda Road, Yuhong District,
Shenyang, China, Post Code : 110141
Tel: 86-24-2530-0108 Fax: 86-24-2583-2321

*Shanghai Hyundai Elevator Manufacturing Co., Ltd.

• Head Office(Factory)
Xiaozheng Qingpu Xian, Shanghai, China 201716
Tel: 86-21-5981-3981/3990/3961/3971 Fax: 86-21-5981-3982

• Shanghai Office

27F, Jinxuan Bldg., No.238 Nandan Rd(East),
Shanghai, China, 200030
Tel: 86-21-6427-6616 Fax: 86-21-6427-4428

SB20

- **Ceiling**
CD451B / Acryl / Acryl Lens / Painted Steel (P021)
- **Wall**
Polyvinyl Sheet (ME04, ME5011) / Aluminium Di-Casting Trim
- **Car Doors**
Polyvinyl Sheet (ME04)
- **Operating Panel**
OPP-D240B,
OPP-N240W (For the disabled)
- **Handrail**
Stainless Steel 1Pipe (1A)
- **Entrance Column**
Hairline-Finished Stainless Steel
- **Flooring**
Polyvinyl Tile (86516)



SB21

- **Ceiling**
CD469B / Acryl / Painted Steel (P017)
- **Wall**
Hairline Etched Stainless Steel (SE439)
- **Car Doors**
Hairline Etched Stainless Steel (SE439)
- **Operating Panel**
OPP-N240,
OPP-N240W (For the disabled)
- **Indicator**
Deluxe Type(PI-D600)
- **Handrail**
Stainless Steel 1Pipe(1R)
- **Entrance Column**
Hairline-Finished Stainless Steel
- **Flooring**
Polyvinyl Tile
(TN2202C, TN2203C, TN2211C)



SE34

- **Ceiling**
CD516B (Indirect lighting)/
Convective Air Sterilization System
- **Wall**
Hairline Etched Stainless Steel (SE739),
Galaxy Art(AF-G-246)
- **Car Doors**
Galaxy Art(AF-G-246)
- **Operating Panel**
OPP-N240B,
OPP-N240W (For the disabled)
- **Indicator**
Deluxe Type(PI-D600)
- **Handrail**
Stainless Steel 1Pipe(1A)
- **Entrance Column**
Hairline-Finished Stainless Steel
- **Flooring**
Polyvinyl Tile
(TN2211C, TN2401C, TN2412C)



SE35

- **Ceiling**
CD249C/ Acryl / Painted Steel (P021)
- **Wall**
Hairline Etched Stainless Steel (SE1168)
- **Car Doors**
Hairline Etched Stainless Steel (SE1168)
- **Operating Panel**
OPP-N240B,
OPP-N240W (For the disabled)
- **Indicator**
Deluxe Type(PI-D600)
- **Handrail**
Stainless Steel 1Pipe(1A)
- **Entrance Column**
Hairline-Finished Stainless Steel
- **Flooring**
Polyvinyl Tile (DTF5311, DTF5906)



Notes) 1. The price will vary depending on the customer's specifications.
2. Finished product may vary slightly from these prints.

Notes) 1. The price will vary depending on the customer's specifications.
2. Finished product may vary slightly from these prints.

SD33

- **Ceiling**
CD516C (Indirect lighting)/
Convective Air Sterilization System
- **Wall**
Dull-Finished Stainless Steel,
Galaxy Art (AF-G-247)
- **Car Doors**
Galaxy Art (AF-G-247)
- **Operating Panel**
OPP-D240B,
OPP-N640 (For the disabled)
- **Handrail**
Stainless Steel 1Pipe (1A)
- **Flooring**
Polyvinyl Tile (DTF5311, DTF5907)



SD34

- **Ceiling**
CD519D (Indirect lighting)/
Convective Air Sterilization System
- **Wall**
Mirror Etched Stainless Steel(SE1170),
Galaxy Art (AF-G-511)
- **Car Doors**
Mirror Etched Stainless Steel(SE1170)
- **Operating Panel**
OPP-D240B
- **Handrail**
Stainless Steel 1Pipe (1R)
- **Entrance Columnn**
Mirror Stainless Steel
- **Flooring**
Visenova (Crema Mafil / Marron Imperial)



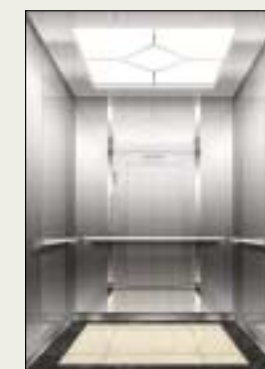
SD35

- **Ceiling**
CD251A / Painted Steel (P022) / Acryl /
Convective Air Sterilization System
- **Wall**
Ba Pattern Blasted Stainless Steel/
Pattern Blasted Mirror Stainless Steel (SE1184)
- **Car Doors**
Pattern Blasted Mirror Stainless Steel (SE1184)
- **Operating Panel**
Mirror Stainless Steel
OPP-N240B (Swing Panel)
- **Indicator**
Deluxe Type(PI-D110)
- **Handrail**
Stainless Steel 1Pipe (1A)
- **Flooring**
Polyvinyl Tile (TN2206C, TN2706C)



SD36

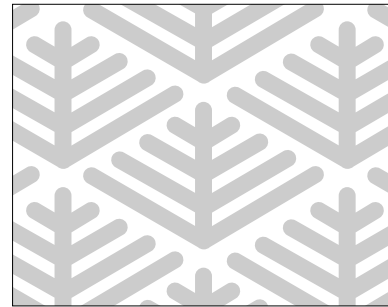
- **Ceiling**
CD291C / Acryl / Mirror Stainless Steel
- **Wall**
Ba Pattern Blasted Stainless Steel
Pattern Blasted Mirror Stainless Steel (SE1172)
- **Car Doors**
Pattern Blasted Mirror Stainless Steel (SE1172)
- **Operating Panel**
Ba Pattern Blasted Stainless Steel
OPP-N250B (Swing Panel)
- **Indicator**
Deluxe Type(PI-D110)
- **Handrail**
Stainless Steel 1Pipe (1A)
- **Flooring**
Marble (Optional)



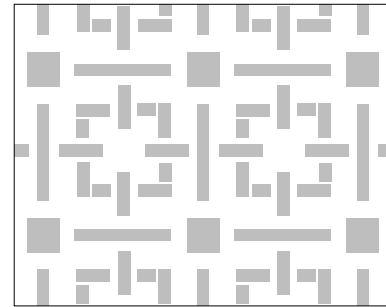
Notes) 1. The price will vary depending on the customer's specifications.
2. Finished product may vary slightly from these prints.

Notes) 1. The price will vary depending on the customer's specifications.
2. Finished product may vary slightly from these prints.

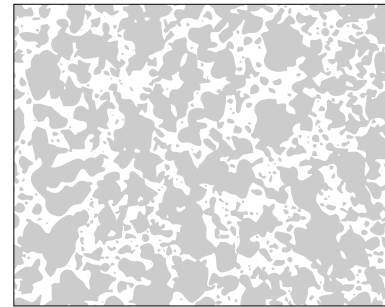
ETCHING



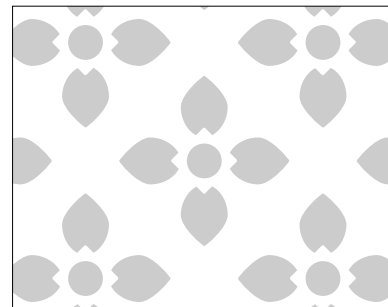
▲ SE403



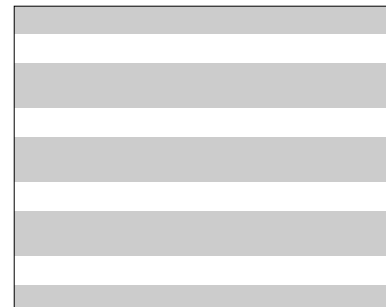
▲ SE406



▲ SE409



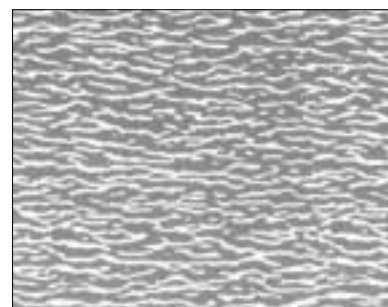
▲ SE424



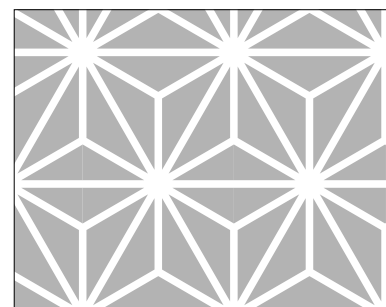
▲ SE439



▲ SE785



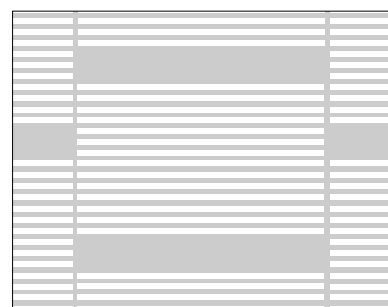
▲ SE859



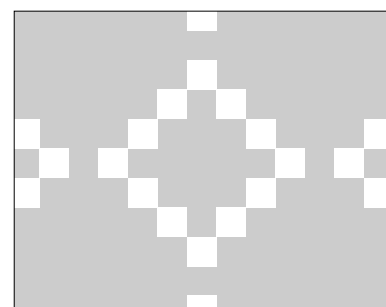
▲ SE928



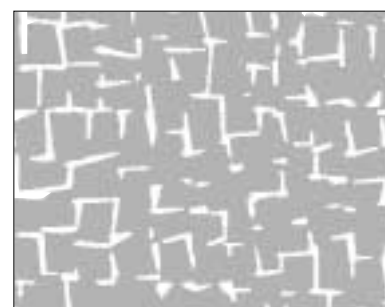
▲ SE1168



▲ SE1169



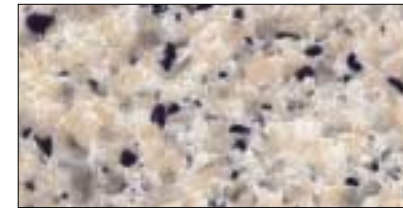
▲ SE1172



▲ SE1184

Note) ■ : 凸 Emboss □ : 凹 Intaglio

POLYVINYL TILE



▲ RN33013



▲ RN33016



▲ RN33019



▲ RS10017



▲ RS15001



▲ RT22011



▲ TN2202C



▲ TN2227C



▲ TN2211C



▲ TN2503C



▲ TN2601C



▲ TN2604C

HANDRAIL Wood designs are available.



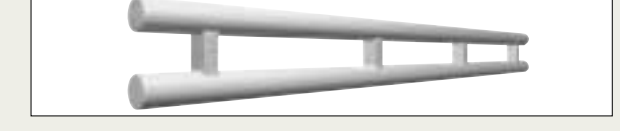
▲ 1A (AL Bracket /1Pipe Stainless Polished)



▲ 1B (1 Pipe Stainless Hairline, Chrome Bracket)



▲ 1R (1Pipe Stainless Polished)



▲ *2R (2 Pipe Stainless Polished)

Note) * : Optional